

## **ABLOY®** CABINET LOCKS

*Complete control for your environment*



# ABLOY® CABINET LOCKS

ABLOY® cabinet locks feature a wide range of applications for various types of office furniture, lockers, cabinets, storage chests, wardrobes, sliding doors, display cases and other fittings. All ABLOY® cabinet locks have a uniform, exquisite design to meet the high quality design requirements of your office.



## Contents

ABLOY® cabinet locking security	3
Patented cylinder technologies	3
Key security	3
Complete cabinet range	4
Unique security	5
Cabinet locks	6
Push button locks	6
Cabinet locks with central locking bar	6
Electromechanical industrial locks	7
Coin operated locks	7
Safe deposit locks	7
Buzzer locks	7
The right product for every application	8
How to order	11
Accessories	12

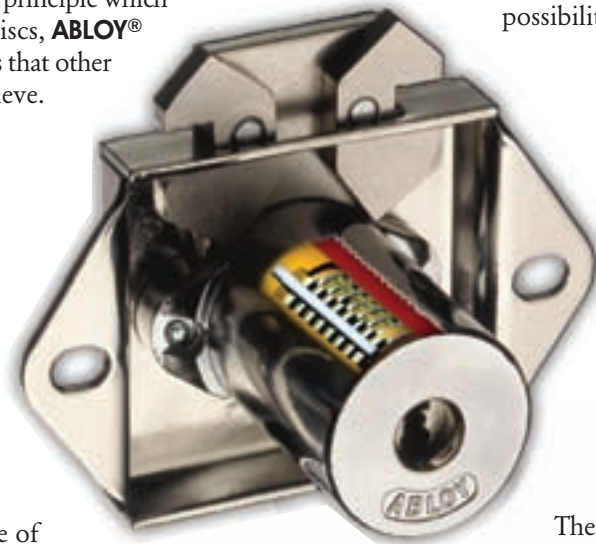
The unique **ABLOY®** cylinder construction, patented cylinders, strict key control and extensive masterkeying capabilities make **ABLOY®** cabinet locks ideally suited for the most demanding applications.

## Unique construction

Based on a unique operating principle which employs rotating detainer discs, **ABLOY®** cabinet locks offer advantages that other locking systems cannot achieve.

## Resistance to harsh conditions

The **ABLOY®** cylinder contains no springs or pins which could cause it to malfunction in a wide range of environmental conditions. All the components are highly resistant to wear, dirt, moisture, corrosion or freezing conditions.



## Masterkeying capabilities

The several million different key combinations available mean that the **ABLOY®** cylinder offers extensive master keying possibilities. All **ABLOY®** cylinder products can be made to operate with just a single key.

## User-friendly

The disc control system and symmetrical key make **ABLOY®** cabinet locks easy to operate.

## Virtually pickproof

Only the correct key can align the gates on all the discs and permit the locking bar to disengage the cylinder from the housing.

The **ABLOY®** PROTEC cylinder employs a new, patented disc blocking system (DBS) which makes it impossible to manipulate the cylinder so that it opens without the correct key.

## PATENTED CYLINDER TECHNOLOGIES

In addition to symmetrical key and disc steering system that the patented **ABLOY®** cylinder options offer, both **ABLOY®** EXEC and **ABLOY®** PROTEC have specialised features which make them ideally suited for the particular applications.



### ABLOY® EXEC

- Nickel-silver key with heavy-duty polymer key bow
- Patented key, key blank and cylinder construction
- Particularly suitable for industrial locking systems
- Exceptional picking and environmental resistance



### ABLOY® PROTEC

- All metal key
- Patented key, key blank and cylinder construction
- Disc blocking system (DBS)
- Can be masterkeyed with door-lock cylinders
- Extensive range of **ABLOY®** industrial locks available

## KEY SECURITY

To guarantee maximum customer security **ABLOY®** cylinder system offers a variety of key profiles and patented key security levels with a factory-controlled key service.

### Customer level

Exclusive keyways for applications where the highest level of key security is required.

### Factory level

The supply of keys is controlled by either the **ABLOY®** factory or an **ABLOY®** sales office.

### Authorised **ABLOY®** dealer level

Keys are supplied by an **ABLOY®** authorised security centre under contract.

# COMPLETE CABINET RANGE



**ABLOY®** cabinet locks provide original or retrofit security for various types of office furniture, lockers, cabinets, storage chests, wardrobes, sliding doors, display cases and in many other applications. The comprehensive range of **ABLOY®** cabinet locks includes furniture locks, push button locks, safe deposit locks, electromechanical industrial locks, coin operated locks.



All **ABLOY®** cabinet locks have a uniform, exquisite design to meet the high quality design requirements of your equipment.



## REFERENCES

The most demanding security institutions have trusted **ABLOY®** locks since 1907. Thousands of manufacturers have chosen **ABLOY®** locks to secure their high quality products, such as

- museums
- jewellery shops
- department stores
- offices
- universities

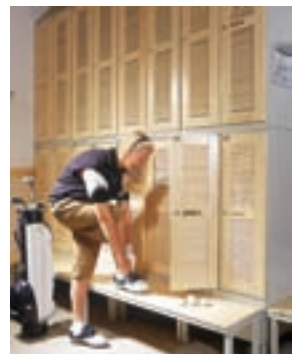
# UNIQUE SECURITY



Electromechanical industrial locks feature advanced high security solutions that offer increased security over conventional locking applications. Additional protection is provided against criminal attacks in any kind of business that deals with money or valuables. Electromechanical industrial locks combine a high security **ABLOY®** cylinder and electrical control designed to prevent unauthorized use of the key.

## REFERENCES

- banks
- aquatic centers
- shopping malls
- vending machine operators



## CABINET LOCKS



### Applications

**ABLOY®** furniture locks provide original or retrofit security for metal or wooden furniture like medicine chests, lockers, cabinets, storage chests, wardrobes, sliding doors, display cases etc. OF205 is specially designed for furniture where extra security is needed. The locks are suitable for surface or recessed fitting with flat, hooked or spring latch bolts.

### Material and finish

Cylinder housing of chrome-plated zinc. Lock case, striker plate and bolt of nickel-plated steel. The latch bolt of OF202 and OF217 is of brass. Spacer piece of plastic.

## PUSH BUTTON LOCKS



### Applications

The most reliable security locks for sliding doors on office furniture, showcases, merchandising sections, metal cabinets, sliding glass units etc. OF404 and OF400 are specially designed for wooden units, OF407 for glass units and OF406 and OF408 for metal units or doors. OF401 and OF405 are designed for glass sliding doors with aluminium profile.

### Material and finish

Cylinder housing and OF403/OF407 mounting ring of chrome-plated zinc. Collar and escutcheon ring of chrome-plated brass. Bolt of nickel-plated steel. OF401 and OF405 available only in satin chrome.

## CABINET LOCKS WITH CENTRAL LOCKING BAR

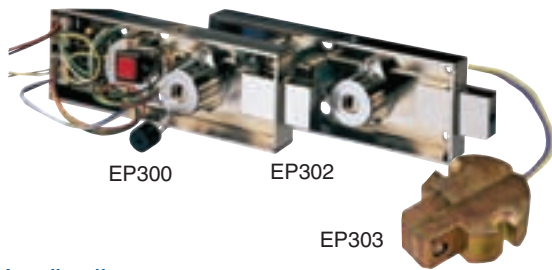


### Applications

**ABLOY®** cabinet locks with central locking bar are used for central locking of office furniture.

### Material and finish

Cylinder housing of chrome-plated zinc. Lock case and bolt of nickel-plated steel. Spacer piece of plastic.



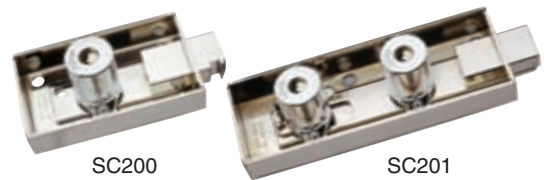
### Applications

**ABLOY®** electromechanical industrial locks feature advanced high security solutions that offer increased security over conventional locking applications. EP300 offers high-security locking with time protection in any business that deals with money or valuables. EP302 is a unique double-locking unit ideally suited to applications that require mechanical key security combined with electrical control to prevent unauthorized use of the key. EP303 is an electric locking unit for use in industrial applications where electrical locking is required.

### Material and finish

**EP300 and EP302:** Lock case and bolt nickel-plated steel, cylinder housing of chrome-plated zinc.

**EP303:** Locking unit yellow passivated zinc. Balls of case-hardened steel.



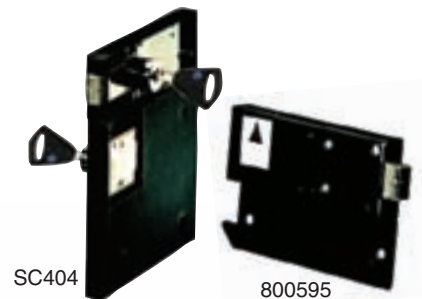
### Applications

For locking of safe deposits, safes and other equipment demanding special locking security. SC200 is a single-cylinder lock operated with customer's key, and it can be connected to operate with an electric striker plate. SC201 includes two mechanically operated cylinder, one of which is operated by the customer's key and the other by the banker's key. Both keys are required to open the lock, but the locking can be carried out with the customer's key only.

### Material and finish

Cylinder housing of chrome-plated zinc. Lock case and bolt of nickel-plated steel.

## COIN OPERATED LOCKS



### Applications

**ABLOY®** coin operated locks are available either with a coin tray (800595), whereby the customer gets the coin back when opening the lock, or coin box (SC404), whereby the coin remains within the coin box to be collected by the owner of the locker. The locks can be modified to operate with different kinds of coins by replacing the coin identifier.

### Material and finish

Cylinder housing of chrome-plated zinc. Lock body and coin box of zinc-plated steel coated with black polyurethane paint. The steel bolt has nickel-plating.

Model	Product numbers	Dimensions (mm)	Cylinder protrusion A	Door thickness	Key removable		Number of discs	Type of bolt	Cylinder type *)		
					In locked position only	In locked and unlocked pos.			C	E	N
					CABINET LOCKS						
OF200 (3461) OF201 (3462) OF215 (3411) OF216 (3412)		25.5 25.5 N19.5 C17.5 N19.5 C17.5	0.5-25 0.5-25 0.5-19.5 0.5-19.5				11 11 7 7	flat flat flat flat			
OF202 (3467) OF217 (3417)		21 N15 C13	0.5-21 0.5-15				11 7	spring latch spring latch			
OF205		25.5	0.5-25				11	double hook			
OF206 (3451) OF207 (3452) OF212 (3401) OF213 (3402)		35 35 N29 C27 N29 C27	12-35 12-35 12-29 12-29				11 11 7 7	flat flat flat flat			
OF208 (3457) OF214 (3407)		35 N29 C27	12-35 12-29				11 7	hook hook			

Model	Product numbers	Dimensions (mm)	Cylinder protrusion A	Door thickness	Key removable		Number of discs	Type of bolt	Cylinder type *)		
					In locked position only	In locked and unlocked pos.			C	E	N
					CABINET LOCKS WITH CENTRAL LOCKING BAR						
OF203 (3481)		35	12-35				11	flat			
OF210 (3486)		35	12-35				11	flat			
OF211 (3487)		35	12-35				11	flat			

☐ = Patented cylinder systems

\*) C = ABLOY CLASSIC E = ABLOY EXEC N = ABLOY PROTEC



# FOR EVERY APPLICATION

Model					Key removable		Number of discs	Cylinder type *)		
Product numbers	Dimensions (mm)	Overall length A	Housing B	Door thickness	In locked position only	In locked and unlocked pos.		C	E	N
OF400 (3421) OF404 (3420)		48	34	12-34		●	11	●	●	●
		N42 C40	N28 C26	12-26		●	7	●		●
OF403 (FIN556) OF407 (3427)		48	33	2-9.5		●	11	●	●	●
		N42 C40	N27 C25	2-9.5		●	7	●		●
OF401 OF405						●	7	●		●
						●	11	●	●	●
OF406 (3426)		40	36	0.5-2		●	7	●		●
OF402						●	11	●	●	●
OF408 (3428)		57	28	12-26		●	7	●		●

Model					Number of discs	Cylinder type *)		
Product numbers	Dimensions (mm)					C	E	N
SC200					11	●	●	
SC201					11	●	●	

■ = Patented cylinder systems    \*) C = ABLOY CLASSIC    E = ABLOY EXEC    N = ABLOY PROTEC

ELECTROMECHANICAL IND. LOCKS	Model		Current consumption	Min. pulse duration	Oper. voltage	Number of discs	Cylinder type <sup>*)</sup>		
	Product numbers	Dimensions (mm)					C	E	N
	EP300						8	●	
EP302			240 mA	0.4 s	6-12V	8	●	●	
EP303			240 mA	0.4 s	6-12V				

COIN OPERATED LOCKS	Model	Dimensions (mm)	Max. door thickness (A)	Handing	Coin		Number of discs	Cylinder type <sup>*)</sup>		
					returned	retained		C	E	N
	SC400/800595 SC401/800595			14.5 18	Right Right	● ●		9 11	● ●	● ●
SC402/800595 SC403/800595			14.5 18	Left Left	● ●		9 11	● ●	● ●	
SC400/SC404 SC401/SC404			14.5 18	Right Right		● ●	9/7 11/7	●/● ●/●	●/- ●/-	
SC402/SC404 SC403/SC404			14.5 18	Left Left		● ●	9/7 11/7	●/● ●/●	●/- ●/-	

## HOW TO ORDER

When ordering, please specify:

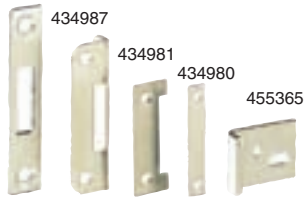
- lock type
- cylinder type (C, E, N)
- key profile
- number of keys
  - C and N: 2 keys / lock included in the price of the lock
  - E: keys to be ordered separately
- finish
- accessories if needed

# ACCESSORIES

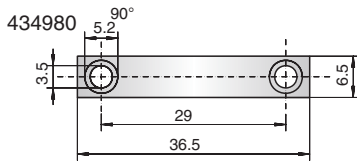
## CABINET LOCKS ACCESSORIES

### STRIKER PLATES

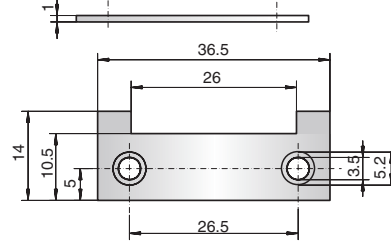
802330



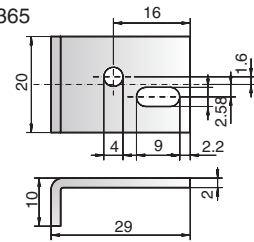
- Material: nickel-plated steel.
- Dimensions



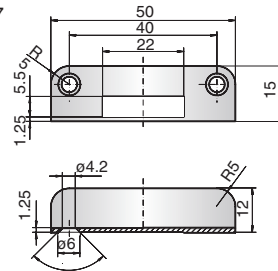
434981



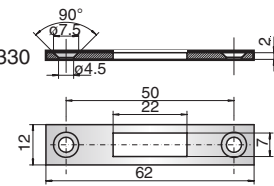
455365



434987



802330

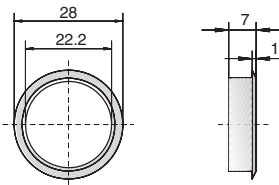


### ESCUTCHEON RING 401746



- Material: chrome-plated brass.
- Available also in other finishes.  
The codes for ordering according to the finish:  
401746 chrome  
401747 satin chrome  
455142 brass

- Dimensions:

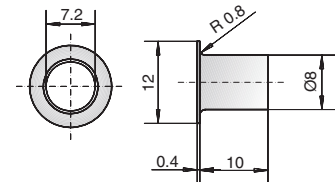


Please Note!  
When using an escutcheon ring the diameter of the fitting hole must be 23-24 mm, and the maximum door thickness can be up to 4 mm thicker than the one mentioned in the table.

### KEEP 401930



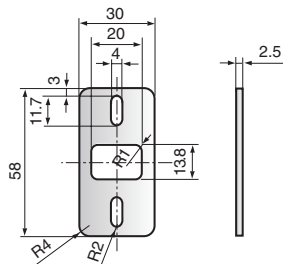
- Material: nickel-plated brass
- Dimensions:



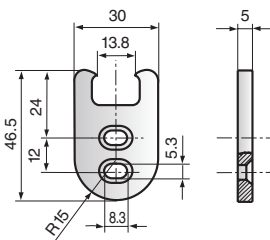
## ACCESSORIES FOR ELECTROMECHANICAL INDUSTRIAL LOCKS

### STRIKER PLATES

800039

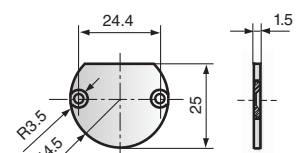


800062



### FITTING PLATE

800522



## ABLOY® – the sign for security



The quality and environmental systems used by Abloy Oy guarantee that customers can be certain of **ABLOY®** quality in every field. We received our first Quality System Certificate - SFS-EN ISO 9001 - in 1989. Just eight years later, Abloy Oy was one of the first companies in Finland to be granted an SFS-EN-ISO 14001 Environmental System Certificate.

Our products are designed and manufactured not only to provide high levels of security, but also to be reliable, user-friendly and aesthetically pleasing. **ABLOY®** is your sign for security.



**ABLOY®** is a registered trademark of Abloy Oy, one of the leading manufacturers of locks, locking systems and architectural hardware and the world's leading developer of products in the field of electromechanical lock technology.

The unique **ABLOY®** detainer disc cylinder mechanism has several advantages over conventional locking mechanisms. Ever since its invention in 1907, it has been a symbol of high security and superior performance.

Our range consists of electromechanical locks, cam locks, padlocks, office furniture locks, rim locks, lock cases, cylinders for different types of mortice locks, door closers, door automatics and architectural hardware. **ABLOY®** locking solutions for every application are available from our world-wide network of distributors.

Customer-oriented development, combined with our long experience and extensive security expertise, mean that **ABLOY®** security solutions employ the very latest technology to meet your needs.



[www.abloy.com](http://www.abloy.com)

Abloy Oy  
Wahlforssinkatu 20  
P.O. Box 108  
FI-80101 JOENSUU  
FINLAND  
Tel. +358 20 599 2501  
Fax +358 20 599 2209

